

ALL IN FOR

VISION  **N2024**

CAPITAL CAMPAIGN

**YOUR INVESTMENT IN LOVE FOR
ST. LUKE COMMUNITY UMC**





LET'S RENEW AND EXPAND!

St. Luke Community United Methodist Church (St. Luke) has been at the forefront of social justice and equality since 1933. We embrace our rich history and heritage of a congregation and work constantly to provide necessary services to the community. Faith is the cornerstone of everything we do, which guides us and makes us stronger.

In a world that is divided and too often uncommunicative, St. Luke is committed to being a warm, welcoming, and innovative congregation. Our doors are open to everybody! We are an oasis of inclusivity that goes beyond race and socio-economic status.

We are committed to **BUILDING** on our long history by strengthening and expanding our support to our neighborhood.

We fought for our community and embraced, worked, and supported it. And yet, we have just begun!

We are **PIONEERS**. We have thrived and have grown to 4,000 members today. **YES**, you read that right!

We are a **VIBRANT** congregation, filled with passion and love. We continuously work to strengthen our community and to be an island of love and compassion.





A SPIRITUAL DESTINATION

We are your spiritual destination.

And if you are not there yet, we want to support you on your journey.

At St. Luke, we nurture faith across the generations, weaving history and tradition into worship. We bring faith into the context of our daily lives. Worship at St. Luke is an experience for body and mind. Our doors are never closed. We are proud to welcome all races, ethnicities, gender identities, classes, and life journeys.

We are waiting for you.

CENTER FOR ARTS & EDUCATION

We are committed to enhancing your wholeness as a person with the arts, social justice, and service.

When you walk into our sanctuary and look up, you'll see 53 magnificent stained-glass windows designed by the beloved artist, the late Laura Jean Lacy. Our home serves as a teaching and worship center as well as a religious art museum. St. Luke's famous Heritage Windows celebrate the African-American story and represent the heritage, faith, and culture in the lives of African-Americans in Dallas and beyond. Our church is committed to teaching the vital relationship between African-American culture and tradition.

Our Heritage Windows are a powerful and challenging witness to that commitment.

VISION 2024

At our 2024 Leadership Summit, Rev. Olu Brown asked, “What’s the one thing we could do that would change the course of the church’s future?”

Our answer: St. Luke is a “spiritual destination” for personal and community transformation. Vision 2024 is focused on growth and impact: growth of the church and impact in the community. The two go hand in hand.

For St. Luke to live into being a "spiritual destination," improvements and expansion on the main campus are required:

Main Campus Improvements & Expansion include the following:

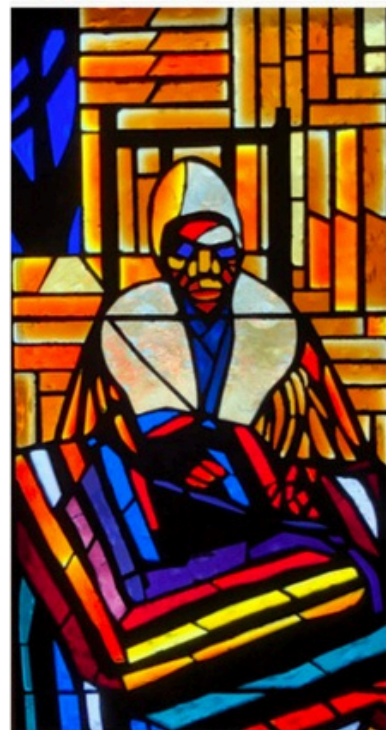
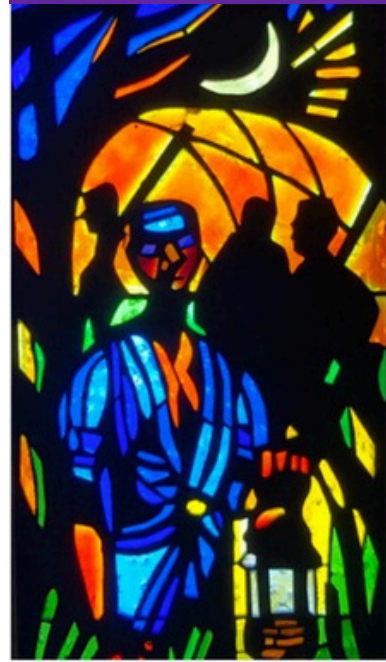


Phase 1

- NextGen Campus (two new modular buildings and Youth Center improvements)
- Lobby/Community Commons (multipurpose area used as a lobby and for meetings, events, reception, and other activities)
- Children’s Ministry Wing (early childhood development for St. Luke Kids)

Phase 2 (long-term)

- Acquisition of Assets for Administrative Offices & Community Empowerment Activities





FAITH IN ACTION

Our faith in action is expressed in worship and arts, community engagement, and spiritual and physical care for the next generation. Proverbs 22:6 states, “Train children in the way they should go; when they grow old, they won’t depart from it.”

Everyday we support our wider community and anyone who walks through our doors.

Current community engagement and missions programs include:

- eviction prevention (HERO Fund)
- assistance with mortgage, rent, and basic utilities costs
- educational needs for Dallas ISD students
- emergency or temporary shelter for people with no place to live, especially during inclement weather
- temporary shelter for those who have been displaced by natural disasters and other tragedies, such as fires
- food distribution, including fresh fruits/vegetables (in partnership with Harvest Project) and hot meals
- clothing collection and distribution
- health & wellness services, including COVID-19 vaccinations and testing (in partnership with Project Unity)
- Year-round Angel Tree for children with parents who are incarcerated
- CarePortal for children in foster care (a platform of The Global Orphan Project; St. Luke will soon be designated a CarePortal sponsor)

ST. LUKE'S ECONOMIC IMPACT ON NORTH TEXAS

The Economic “Halo Effect” Study, developed by Partners for Sacred Places and the University of Pennsylvania’s School of Social Policy & Practice, employs 20+ measures to quantify the full range of economic impact that congregations have on their communities. Based on this study, St. Luke Community UMC generates nearly \$5.75 million in annual economic impact.



ST. LUKE'S REACH IN DETAIL:

Hosting events and programs that catalyze visitor spending – **\$778,952**

Impacting individual lives, enabling people to work, and reducing government spending – **\$2,016,079**

Direct spending in the local economy through operations and building maintenance - **\$2,574,233**

Operating and hosting community-oriented programs supplements the activity of the local government and social service agencies, adding value to the community – **\$374,173**

Utilizing green space and recreational space to improve our environment and lower energy costs - **\$1,451**

WHAT DOES THIS MEAN?

St. Luke gives back close to \$6 million per year in North Texas! We need your support to make sure St. Luke remains a strong partner throughout our neighborhoods and cities. Our “All in With Vision 2024” Capital Campaign will expand our impact by further amplifying our firm voice against social inequality and deepening our influence in North Texas and beyond.





YOUR INVESTMENT IN LOVE

St. Luke Community UMC is embarking on a capital campaign to **EXPAND** our **IMPACT** - to **GROW** and **SERVE**.

Through our “All in With Vision 2024” Capital Campaign, we want to raise \$10 million to **AMPLIFY** our services to the community and be the **HUB** for energetic worship, spiritual connection, arts, and education through innovative programming, social justice, and advocacy. In other words, we want to be your spiritual destination!

JOIN THE MOVEMENT!

St. Luke has **MOMENTUM** and is rallying toward a common purpose! We want to partner with **YOU**. Our goal is **AMBITIOUS**, and we can do it with support from the North Texas community. Your support will **BUILD** a Community Welcome Center to host community events, youth programming, and social services.

PLEASE SUPPORT OUR VISION

Together we can realize “All in With Vision 2024” and provide continued services to the community for another 90 years. Raising \$10 million (and maybe more?) will require sacrificial giving from St. Luke.

We ASK you to JOIN us and GO!



VISION



N

2024

CAPITAL CAMPAIGN